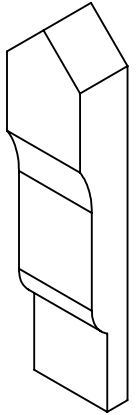
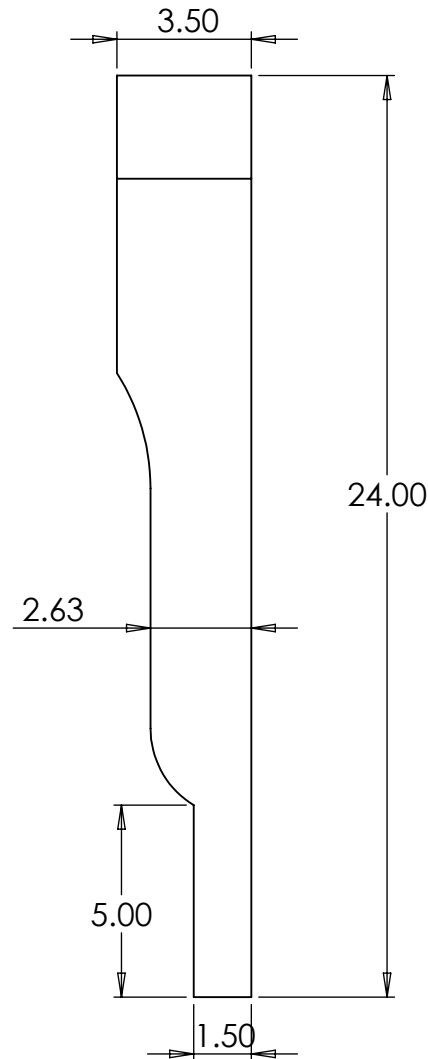
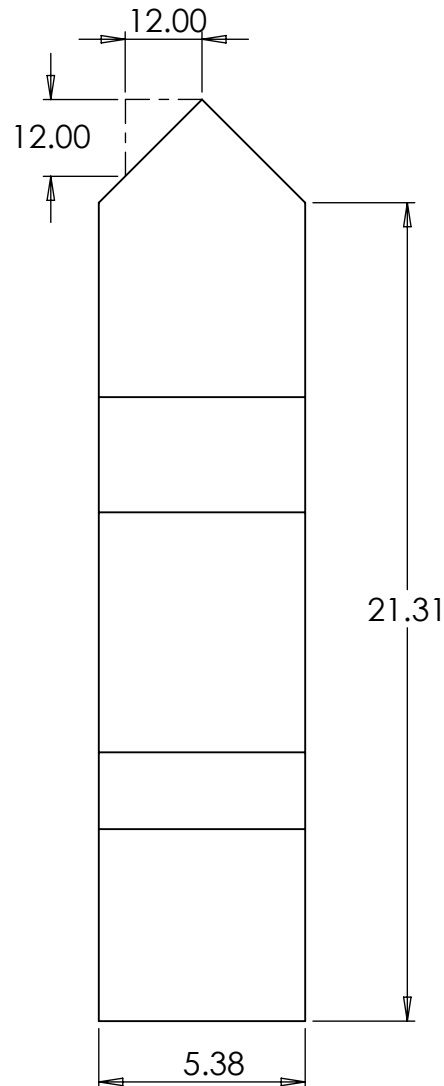


|      |                 |             |           |
|------|-----------------|-------------|-----------|
| REV: | DESCRIPTION:    | REVISED BY: | DATE:     |
| A    | WAS BR424-12/12 | JR          | 9/18/2018 |



| Tolerances |          | Tolerances |             |
|------------|----------|------------|-------------|
| 0-24" ±    | 40-48" ± | 000-610 ±  | 1017-1219 ± |
| 1/32"      | 5/64"    | 1.0mm      | 2.0mm       |
| 24-32" ±   | 48-60" ± | 611-813 ±  | 1220-1514 ± |
| 3/64"      | 3/32"    | 1.3mm      | 2.5mm       |
| 32-40" ±   | 60-70" ± | 814-1016 ± | 1515-1778 ± |
| 1/16"      | 1/8"     | 1.6mm      | 3.2mm       |

**NU-WOOD**<sup>TM</sup>  
SYNTHETIC ARCHITECTURAL MILLWORK



**Nu-Wood by Jasper Plastics**

501 W Railroad Ave Syracuse, In 46567

574-534-1192 O. 253-595-3715 F. sales@nuwood.com

COPYRIGHT 2018 NU-WOOD ALL RIGHTS RESERVED

DESCRIPTION: NW BR24X3.5X5.38-C12

Drawn by:  
JRODES

ITEM NO.: 319160045

Date: 9/18/2018  
Created: 9/18/2018

Volume: 320.56

Scale: 1:5